



CELLAR  
DOOR  
FEST

# Winter Edit

9-10 JULY

## COVID SAFE GUIDELINES

At Cellar Door Fest, we're committed to delivering a fun, COVID Safe Festival. As always, the health and wellbeing of our visitors, producers and event partners remains our priority.

Our 2021 Cellar Door Fest Winter Edit (CDFWE) will operate under the Adelaide Convention Centre's COVID Management Plan with a series of dedicated COVID Safe measures in place. We'll continue to monitor all government regulations in the lead up to the Festival and update our measures as necessary.

Being COVID Safe is a shared responsibility and we ask that all attendees play their part in helping keep our community safe. Ahead of your arrival, please be mindful of some additional procedures below.

### BEFORE THE EVENT

- Tickets to CDFWE are only available for purchase online. There will not be a physical ticketing desk.
- Attendees are asked to accurately complete all contact tracing requirements at time of purchase. When purchasing multiple tickets, contact details for each attendee, including name and mobile phone number, must be entered. If you pass a ticket onto a friend, please make sure you transfer the ticket into their name via the Eventbrite app.

### AT THE EVENT

#### WHAT WE'LL BE DOING

- Scan tickets upon entry as a means of recording arrival time for accurate contact tracing.
- Increased frequency & intensity of cleaning and disinfecting throughout the Festival, with emphasis on high volume areas and touchpoints, and a deep clean at the conclusion of each session.
- Hand sanitiser stations readily available throughout the Festival, including at entry / exit points as well as by designated bathrooms; public catering areas; and scattered across the Festival floor.
- To support physical distancing, there'll be distance markers for queue management. We're also increasing the size of aisles throughout the Festival.
- Designated COVID Marshals in attendance.
- COVID Safe food and beverage service. All food tastings will be provided in individual, single use containers.
- Festival staff will be manning the water stations and handing out water to all visitors to ensure they remain hydrated and safe.

[WWW.CELLARDOORFESTIVAL.COM](http://WWW.CELLARDOORFESTIVAL.COM)

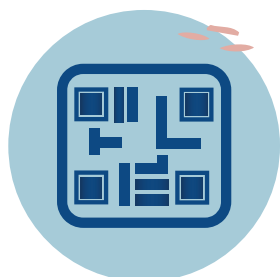


CELLAR  
DOOR  
FEST

# Winter Edit

9-10 JULY

## WHAT YOU'LL BE DOING



All visitors will be required to please 'check in' to the Adelaide Convention Centre upon arrival using the South Australian Government's official 'COVID Safe Check-In'.



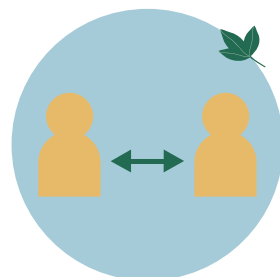
Visitors are encouraged to pay with card where possible. The ACC is a cashless venue.



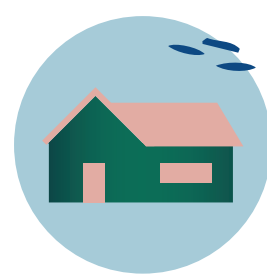
Practice proper hand hygiene and sanitise frequently.



To help avoid congestion at the Festival entrance, please have your mobile ticket ready for scanning upon arrival.



Adhere to all physical distancing protocols including floor markings, as well as noted capacity limits for elevators/bathrooms and instruction provided by our designated COVID Marshals. All visitors are asked to please maintain a minimum of 1.5 metres from others at all times.



Stay home if you:

- Feel unwell or are displaying any cold / flu symptoms; or
- Have been in close contact with someone who has tested positive for COVID-19; or
- Have returned from overseas or have been to a declared COVID-19 hotspot in the immediate 14 day period leading up to the Festival.

*As the COVID situation is dynamic, there is a possibility that restrictions may tighten or lessen in the lead up to, or during the Festival. Should there be any major changes to COVID restrictions, we'll endeavour to communicate directly with you where possible and will provide updates on our Cellar Door Fest Facebook page.*

We are very much looking forward to welcoming you to our 2021 Cellar Door Fest Winter Edit.

We will continue to monitor COVID-19 government guidelines in the lead up to the Festival and adapt our measures as necessary.

[WWW.CELLARDOORFESTIVAL.COM](http://WWW.CELLARDOORFESTIVAL.COM)

